

Thematic Panel Discussion

Technology for Independent Living

Josep Muñoz

General Manager of the Social Services
Department. Equality and Social
Sustainability Area,
Barcelona County Council, Spain



Home Care Technologies: Prediction and Prevention

Thematic Panel Discussion:

Technology for Independent Living

16 June 2023, 10:15-11:30 am

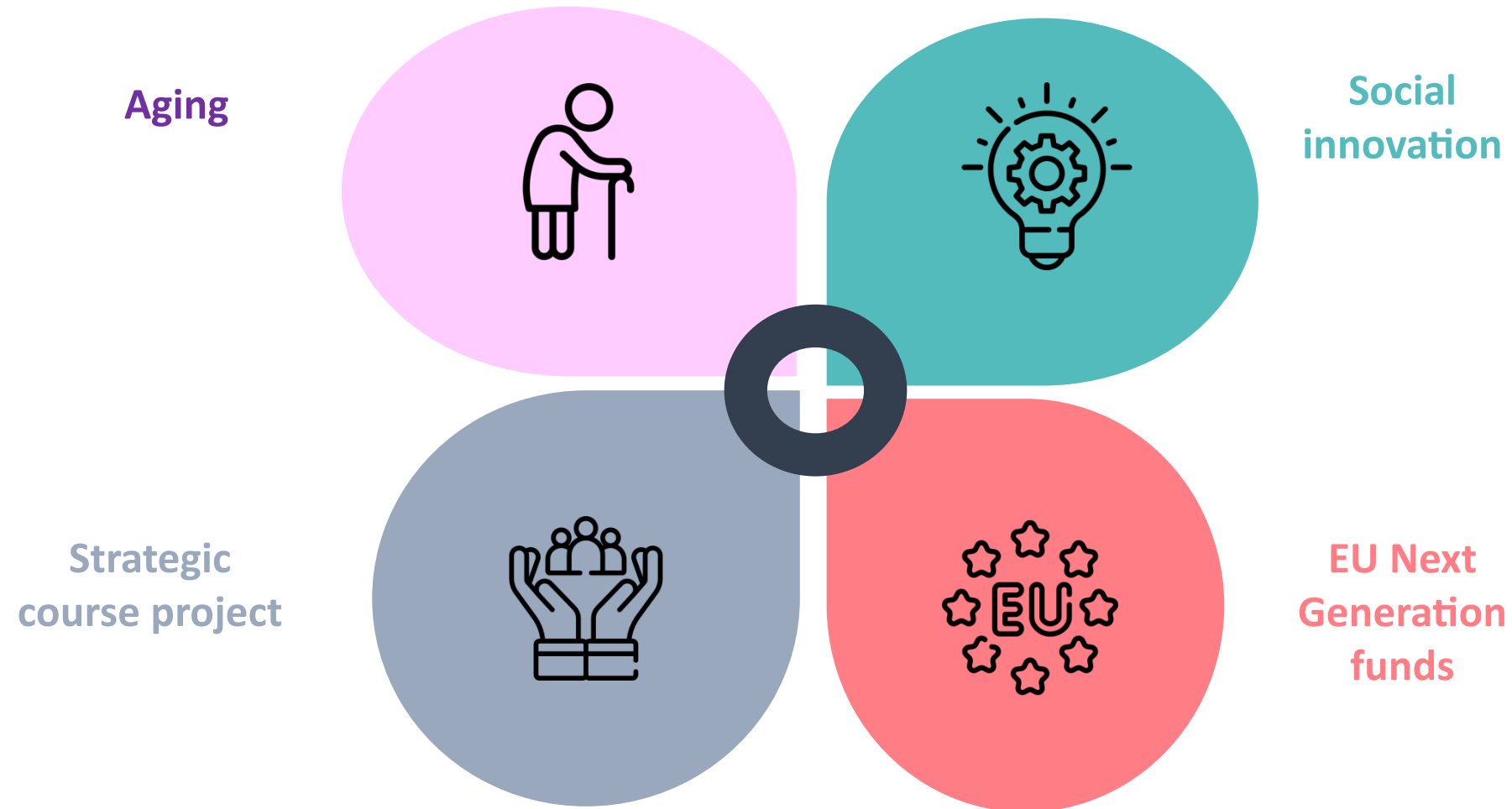
Josep Muñoz, General Manager of the Social Services Department, Equality and Social Sustainability Area, Barcelona Provincial Council, Spain



**Diputació
Barcelona**

Àrea d'Igualtat
i Sostenibilitat Social

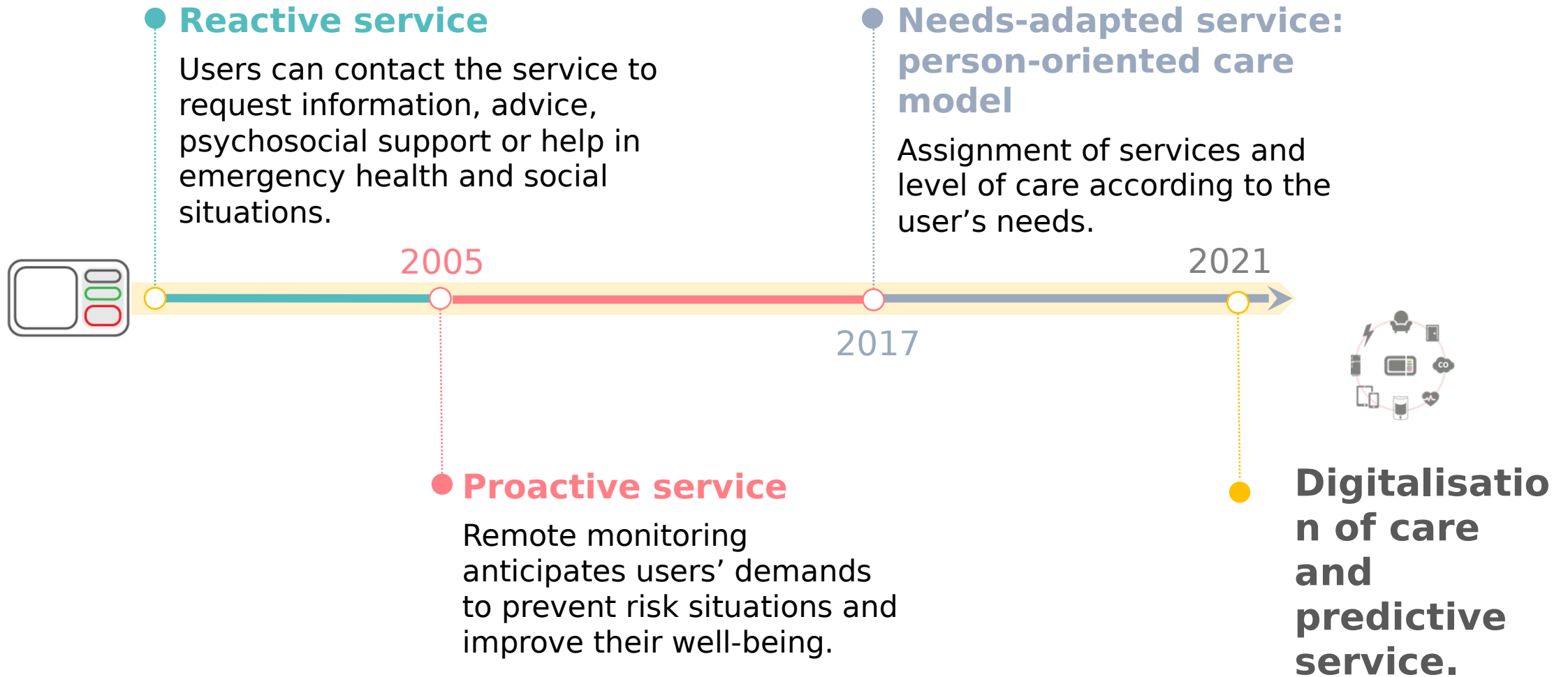
Context



**Diputació
Barcelona**

Àrea d'Igualtat
i Sostenibilitat Social

Service model. Historical background

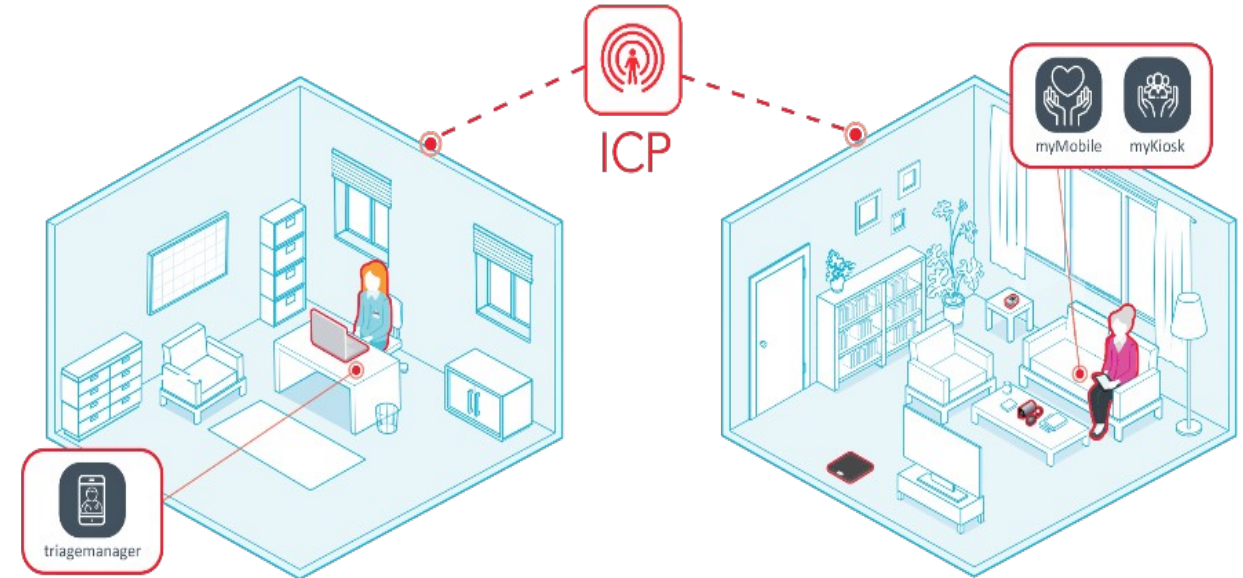


Digital transformation



● TRANSITION IN DIGITALISING THE HOMES OF USERS

- **Internet Protocol technology** installed in homes so we can adapt to the digitalisation process being implemented throughout Europe: greater security and reliability.
- Set up of **advanced detectors and sensors** to make it easier to monitor habits in order to establish patterns of behaviour and to predict risks. Digital homes: “ALL IN ONE SENSOR” PROJECT.



Digital transformation



“All in one sensor”

Obtaining a person's behavioural patterns (sensing) to be able to identify changes in habits, emergency situations and risks early on.



AIOS: “All in one Sensor” - IoT



GWP: gateway

- Temperature
- Moisture
- Presence
- Lighting
- Acceleration
- Infrared rays

- ▶ Early **detection** of the initial stages of cognitive impairment, mental and/or physical illness, or undesired loneliness is essential to be able to allocate suitable services and resources aimed at **delaying the onset of these conditions** or alleviate their effects.
- ▶ People who live **alone** pose greater difficulty when it comes to the detection of risks by those around them.



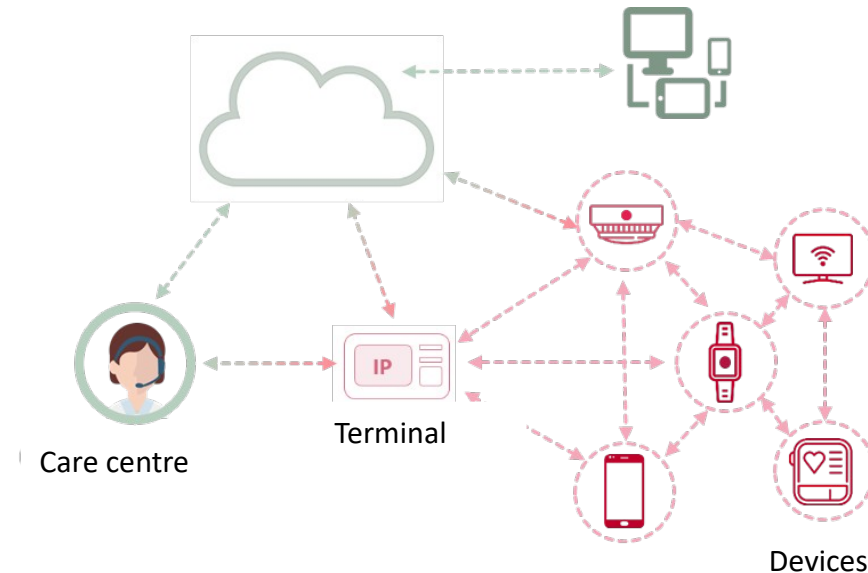
Digital transformation



“All in one sensor”

- It configures a **new behavioural habit management service** via the installation of a host of sensors fitted inside homes.
- It offers advanced **monitoring, learning and prediction** functions.
- It allows resources to be set in motion: **digital cognitive stimulation platform**.
- This is an **Artificial Intelligence (IA)** project based on the **Internet of Things (IoT)**: devices “speak” to one another, beyond the two-way connection of each device with the terminal.

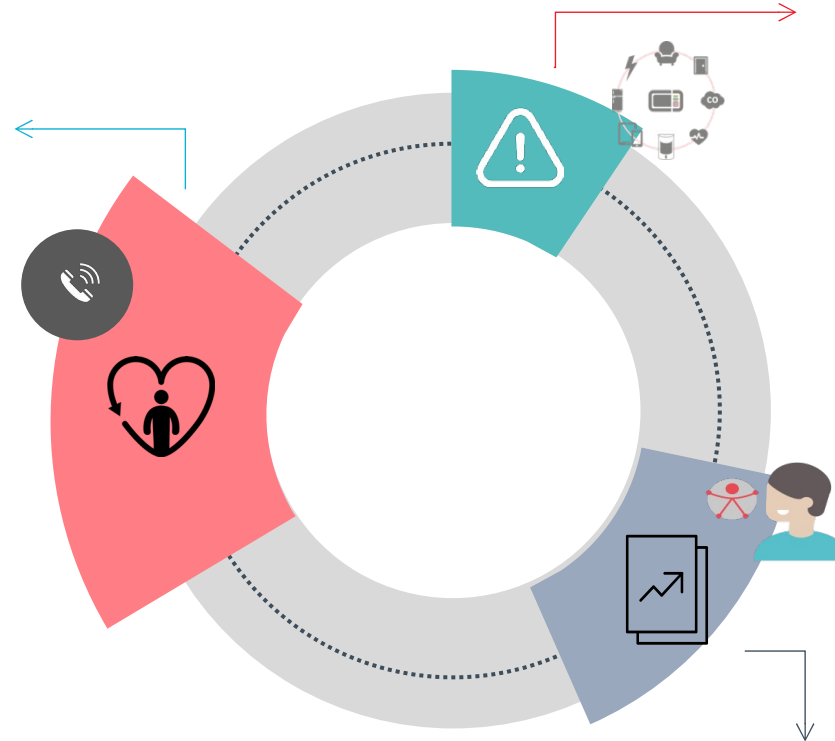
4,000 smart homes



Challenges

Interoperability between social and health services

Ethical aspects and overcoming the **digital divide**



Drive for **sustainable growth of the service**. Expansion of service scope to cover other groups: **universal accessibility**



Diputació
Barcelona

Àrea d'Igualtat
i Sostenibilitat Social