

Interactive Session C

3. AI Profiling to Address Labour Market Changes

Presented by
Accenture


accenture

09:30 – 10:30

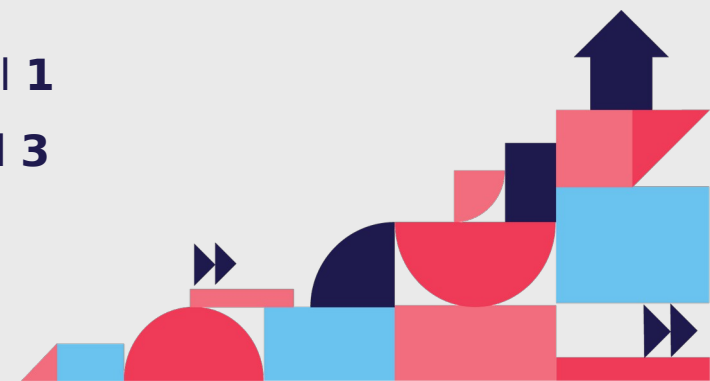
Room HIGH 3



EN - Channel 1



ES - Channel 3



EMPLOYMENT SERVICE OF ANDALUCÍA



Statistical Profiling



Andalucía, Spain



Action Lines:

- **Match people with jobs**
- **Share information about market needs**
- **Leverage Big Data and AI**
- **Build capabilities of the public servants**
- **Make our local communities thrive**



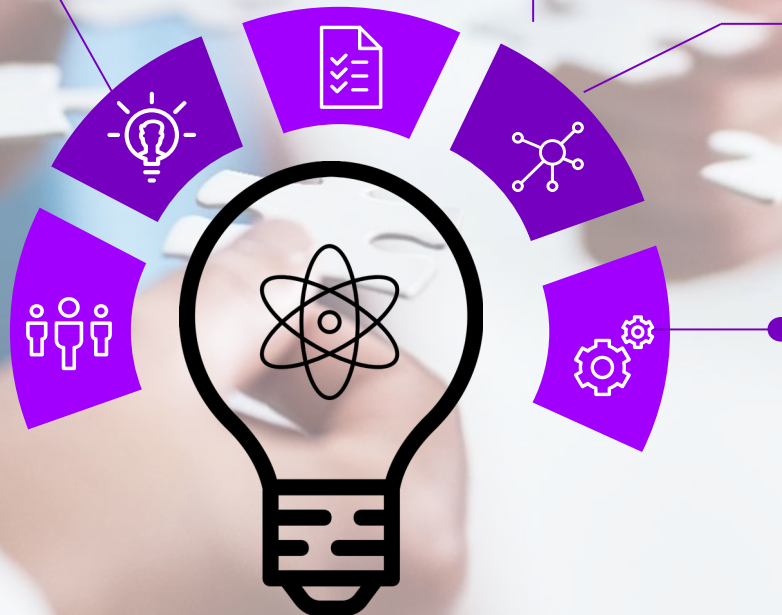
CLASSIFICATION OF JOB SEEKERS ACCORDING TO PROBABILITY OF FINDING A JOB

BIG DATA AND AI TOOLS TO ASSESS EMPLOYABILITY LEVELS

MOST APPROPRIATE RECOMMENDATIONS IN THE SEARCH OF EMPLOYMENT

BETTER EMPLOYMENT SERVICE LEADS TO SOCIAL WELFARE

IDENTIFICATION OF LABOR MARKET NEEDS



STATISTICAL PROFILING | Employment search process

Evaluation of the labor market and the capabilities of the jobseeker using AI techniques



Identification of the requirements for the jobseeker



COMPETENCIES NEW

Employment



First interview and collection of employment preferences



Diagnostic of the level of employability* of the jobseeker



Improvement of jobseeker's employability



Matching of the jobseeker with jobs

Employability: Possibility of finding employment.



MACRO LEVEL

- **Evaluation** of how employment indicators have evolved and **Outlook** on future job offers, contracts finalized, and new jobseekers expected to be registered
- **Public policy implications**
- **Aggregated indicators** for incorporation of jobseekers into the workforce and educational training needed



MICRO LEVEL

- **Assessment** of the jobseeker's profile within the market
- **Individualized indicators** for the incorporation of the jobseeker into the workforce (geographic mobility and occupation)
- **Personalized recommendations** based on the current market
- **Autonomous decision-making**

STATISTICAL PROFILING | Use cases



DIAGNOSTIC

Status of employment and supply / demand forecast



PRESCRIPTION

Individualized recommendations based on the current market



TRAINING NEEDS

Current employment needs and forecast of those generated by the market



INTERMEDIATION

Proposal of occupational alternatives

NEXT STEPS:



VIRTUAL ORIENTATION




ANTICIPATION



EVALUATION OF ACTIONS

HOW TO INNOVATE?

DISRUPTION OF PUBLIC SERVICES

- 
- ✓ **Coordinating between public social service agencies**
 - ✓ **Bridging the gap between jobseekers and employers**
 - ✓ **Providing access to information to employment service workers and sharing it with jobseekers**
 - ✓ **Facilitating early intervention by favoring autonomous decision-making**
 - ✓ **Improving employment public policies**

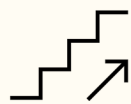
WHAT DO WE DO? WE USE INNOVATIVE TECHNOLOGY TO HELP OUR COMMUNITIES THRIVE



Improve **accessibility**
to employment



Process the data of
the job seeker and
the labor market



**Increase the
employability*** of the
job seeker.



Personalized
recommendations to improve
employability



AI models for data
processing



Thank You