



The Human Touch Versus technology Advancement: Can AI Replace Social Work?

Cherrie Short, CBE
Senior Fellow, New York University
June 27, 2024

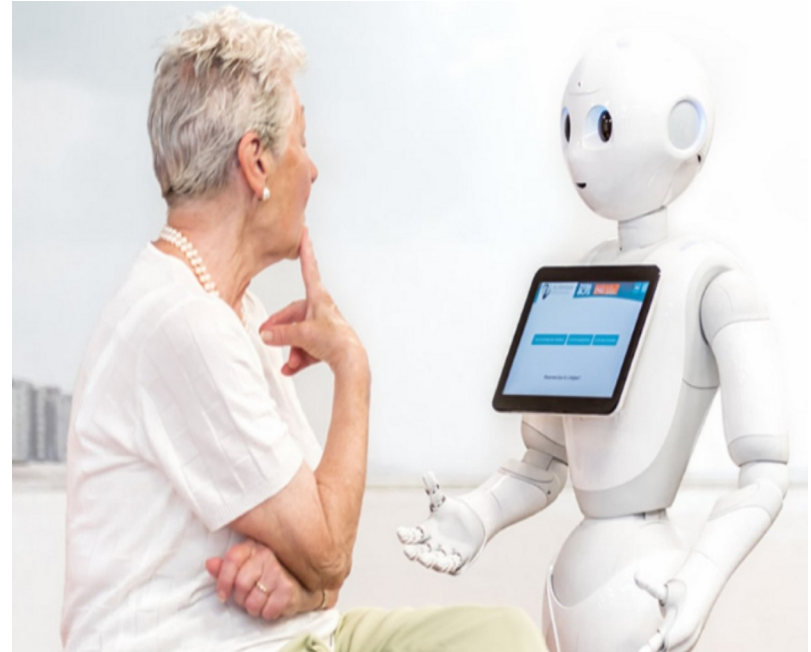


Introduction



The Benefits of AI in Social Work

- Conducting risk assessments
- Strengthening prevention efforts
- Analyzing vast amounts of data to identify patterns and trends
- Automation of administrative tasks

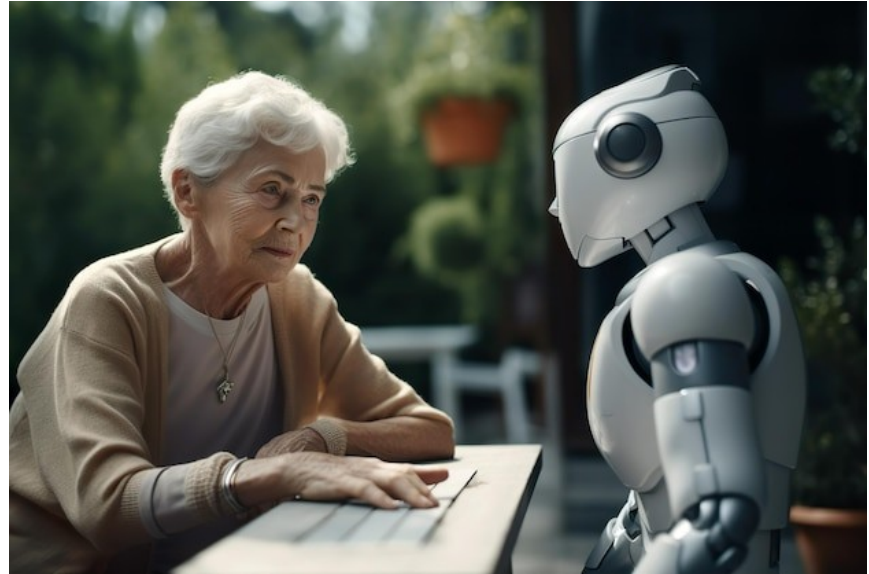


Fundamental Roles and Responsibilities

- Promoting social justice
- Addressing systemic inequalities
- Regardless of background or circumstances, treating individuals with dignity and respect
- Challenging discriminatory practices
- Advocating for policy reforms
- Engaging in community development

Interpersonal Connection

- Personal relationship lies at the heart of social work
- Inherently human centered, relying on empathy and compassion
- Understanding complex emotions and providing emotional support and personalized care
- Navigating cultural contexts
- Understanding the lived experiences of clients



Ethical considerations

- **Confidentiality, integrity, and respect for diversity**
- Erosion of **trust** in client social worker **relations**
- **Algorithmic bias**, including racial, ethnic, and socioeconomic bias
- **Transparency, accountability, and fairness**



Conclusion

- AI offers both opportunities and Challenges
- Technology can enhance service delivery
- Need to safeguard the dignity and rights of clients
- Preserve the human touch in interpersonal connection
- Uphold the ethical principles of social work

